



## EX-HANDY 09

TRACK24'S EX-HANDY 09 IS AN INTRINSICALLY SAFE MOBILE PHONE SPECIFICALLY DESIGNED FOR THE SAFETY OF LONE WORKERS IN HAZARDOUS AREAS

### SUMMARY

The Ex-Handy 09 provides personal tracking to help protect lone workers. Cellular connectivity, extreme endurance and ATEX certification provide safe communication and enhanced security processes for employees at risk from explosive atmospheres.

Supporting Android™ applications such as Lone Worker Protection (LWP) and Push-To-Talk, Track24's Ex-Handy 09 incorporates SMART24, Track24's tracking and emergency app.

### SAFETY PHONE

This rugged phone comes with touch screen, a numeric keypad, high visibility display in direct sunlight and the ability to use the device with gloves.

### SMART24

This software allows for tracking, panic alarms, notifications and situational awareness on the monitoring platform in the control centre.

### EXTREME ENDURANCE

IP68 protected, the device is resistant to shock, extreme temperatures and pressure, and is protected from ingress by water and micro particles.

### GEO-FENCES

Custom geo zones can be set up to ensure employees don't enter restricted zones, notifying the worker and sending an alert back to the monitoring platform.



## EUROPE

+44 (0)20 7434 7305

## MIDDLE EAST

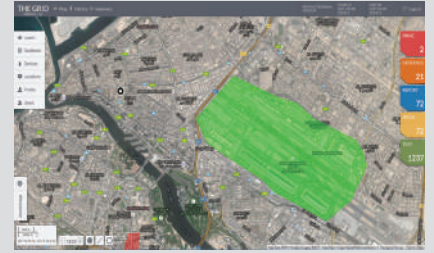
+971 (0)4 429 0576

sales@track24.com

www.track24.com

## MONITORING PLATFORM

The Ex-Handy 09 is combined with Track24's monitoring and incident alert platform to enable organisations to view and communicate with their personnel and assets on a common operating picture.



## INTRINSICALLY SAFE

Delivering safety confidence, the intrinsically safe Ex-Handy 09 has been specifically engineered to never produce sparks or high temperatures, even under fault conditions.

## CERTIFICATION

With ATEX (Europe) certification, this intrinsically safe feature phone is intended for use in hazardous areas of Zones 1 / 21, Zone 2 / 22, Class 1 / Div 1, Class 1 / Div 2. It is also CSA (Northern America) and IECEx (International) certified.



## EX-HANDY 09 SPECIFICATIONS

Dimensions:	137 mm x 65 mm x 26.9 mm
Weight:	330g
Operating System:	Android 4.4
Chipset:	MSM8926 1.2 GHz Quad core
Band:	4G / LTE-standard , Quad Band GSM 850 / 900 / 1800 / 1900 Mhz
WiFi:	802.11 a / b / g / n dual-band, with Hotspot feature
Memory:	8GB Internal Storage / 1GB RAM
User memory:	4GB
Applications:	Google Play Store applications
Bluetooth:	BT4.0 / BLE (Low Energy) Support SMS and MMS
GPS, NFC:	GPS, GLONASS
Languages supported:	Supports 22 languages including Arabic, English and simplified Chinese
Email Client:	EAS, Gmail, POP3, IMAP
Capacity (mAh):	3600 mAh
Battery Life:	Up to 1000 hours. Stand by, up to 40 hours talk time
Ambient temperature:	-20°C to +55°C

MONITORING PLATFORM

PANIC SCREEN

TEXT